



# SPRING SUMMER

2023 OPTICAL COLLECTION

©2023 Caterpillar.

CAT, CATERPILLAR, LET'S DO THE WORK, their respective logos, "Caterpillar Corporate Yellow", the "Power Edge" and Cat "Modern Hex" trade dress as well as corporate and product identity used herein, are trademarks of Caterpillar and may not be used without permission.



## CAT® OPTICAL SS23

**The CAT core and CAT Precision product meet at the perfect intersection of technology.**

The Core CAT yellow logo has become an icon, worn as a badge symbolizing hard work, grit, get it done attitude and built to last.

The Precision black and white logo expands on the already synonymous CAT values and adds another level of quality with engineered hinges with added styling.

- 6 models / 13 sku's
- 2 acetate / 4 metal
- 5 full frames / 1 supra
- Eye sizes ranging from 52- 60
- New bespoke coloured core wire
- Engineered hinges
- Super slim temples



SINCE 1952  
THE CATERPILLAR  
FOUNDATION  
HAS INVESTED  
**\$850M+** IN COMMUNITIES  
AROUND THE  
WORLD

**\$59.4** SALES & REVENUES  
**BILLION** YEAR END 2021





# CAT OPTICAL SS23 INSP0







# CTO 3020

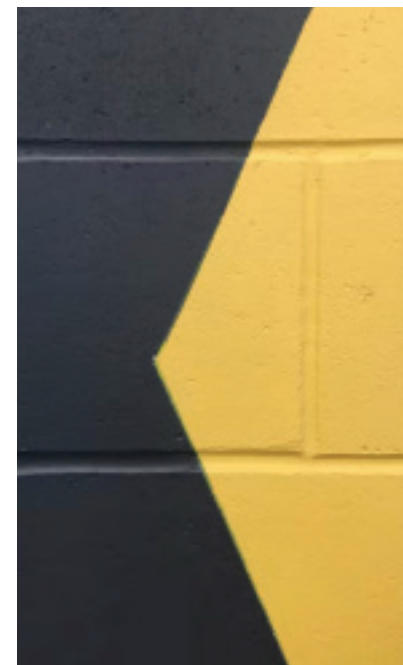
## ACETATE FULL FRAME

59-17-150

B-41

BASE-450

- Handmade acetate frame
- Bespoke coloured core wire with logo
- Spring hinges
- Fully adjustable temples



**CTO-3020-101** Gloss horn



**CTO-3020-104** Gloss black / Crystal



**CTO-3020-108** Gloss grey horn







# CTO 3021

## STAINLESS STEEL / ACETATE FULL FRAME

60-16-150

B-35.1

BASE-450

- Durable stainless steel front
- Spring hinges
- Laser etched logo
- Adjustable temples and nose pads



**CTO-3021-003** Matte brown / Horn



**CTO-3021-004** Matte black





# CTO 3024

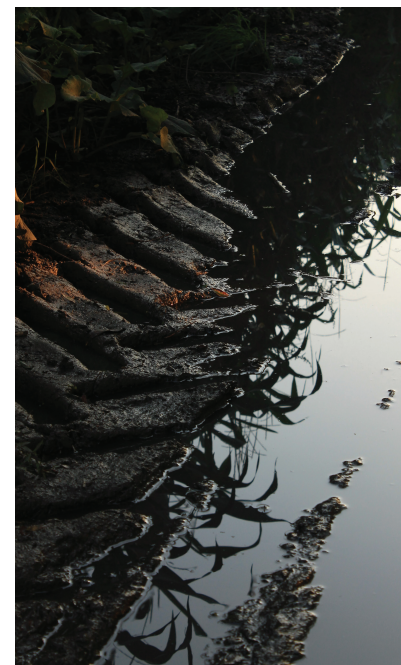
## STAINLESS STEEL / ACETATE FULL FRAME

57-16-145

B-40.3

BASE-450

- Durable stainless steel front with 3 bar bridge
- Spring hinges
- Embossed temple logo
- Adjustable temples and nose pads



**CTO-3024-004** Matte black



**CTO-3024-005** Matte gunmetal







# CTO 3032

## MONEL / ACETATE FULL FRAME

59-17-150

B-38.5

BASE-450

- Full frame rim wire front with 3 bar bridge
- Fully designed casted trim
- Laser etched logo
- Adjustable temples and nose pads



**CTO-3032-004** Matte black / Burgundy



**CTO-3032-006** Matte navy / Blue





# CPO 3529

## STAINLESS STEEL / ACETATE FULL FRAME

54-16-140

B-38.8

BASE-450

- Thin HD acetate front
- Spring hinges
- Slim temple



CPO-3529-104 Gloss black / Gunmetal



CPO-3529-106 Gloss navy fade



PRECISION





# CPO 3533

## STAINLESS STEEL / ACETATE FULL FRAME

52-18-140

B-34

BASE-450

- Flat sheet front
- Bespoke spring hinges



CPO-3533-005 Matte black



CPO-3533-006 Matte navy

PRECISION

# INSPECS

---

LIMITED

## INSPECS- UK

7-10 Kelso Place  
Upper Bristol Road  
Bath BA1 3AU- UK  
Tel: +44 (0)1225 717000  
Fax: +44 (0)1225 717001  
Email: sales@inspecs.com

## INSPECS- USA

30798 US HWY. 19 N  
Palm Harbor  
Florida 34684 – USA  
Tel: +001 (727) 771 7710  
Fax: +001 (727) 771 7712  
Email: info@inspecsusa.com



[www.cat.com](http://www.cat.com) [www.caterpillar.com](http://www.caterpillar.com)

©2023 Caterpillar.

CAT, CATERPILLAR, LET'S DO THE WORK, their respective logos, "Caterpillar Corporate Yellow", the "Power Edge" and Cat "Modern Hex" trade dress as well as corporate and product identity used herein, are trademarks of Caterpillar and may not be used without permission.